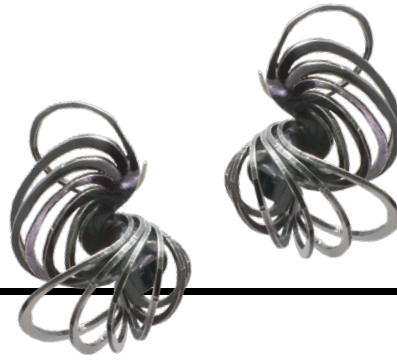


BARBARA J. BAUR

P.O. Box 22116
Philadelphia, PA 19136
215-301-3336
Barb@BarbBaur.com

www.BarbBaur.com



EDUCATION

Master of Fine Arts, Major: Metals Jewelry CAD-CAM
Tyler School of Art, Temple University
Philadelphia, PA 2017

Bachelor of Fine Arts, *cum laude*; Major: Metals Jewelry CAD-CAM, Minor: Art History
Tyler School of Art, Temple University
Philadelphia, PA 2015

Buck County Community College
Newtown, PA 1984 - 1986

Jewelry Apprenticeship
Philadelphia, PA 1982 - 1983

WORK EXPERIENCE

Tacony LAB Coordinator, Philadelphia PA 2017-Present
Serve as on-site staff for community art center, conducting and organizing workshops, promoting community engagement

Adjunct Professor, Tyler School of Art, Temple University, Philadelphia PA 2017-Present
Teaching courses- Intro to Jewelry for non-Major & Jewelry Enameling

Self Employed Jewelry Artist, Philadelphia, PA 2005 - Present
Create jewelry using hand fabrication, lost wax casting and computer aided design
Design and fabricate custom jewelry pieces
Provide freelance individual instruction

Jewelry Instructor, Weekend Workshops, Tyler School of Art, Philadelphia, PA 2014 - 2015
Developed basic jewelry making and fabrication curriculum
Taught wax modeling for lost wax casting

Jewelry Instructor, Jacksonville Center for the Arts, Floyd, VA 2010 - Present
Teach basic metal-smithing, wax modeling and CAD patterning

Care Manager for Disabled Individual, Philadelphia, PA 2005 - 2011
Responsible for all aspects of daily care, household and employee management
Managed trust, household, payroll and personal finances

Administrative Assistant, Harris Corporation, Melbourne FL 2000 - 2005
Assisted and supported several defense communications programs
Officially recognized by the US Army for providing outstanding customer support

Bench Jeweler, Sparkles Jewelry, Melbourne, FL 2003 - 2004
Responsible for repairs and custom designs, Assisted with company marketing
Provided original pieces for retail sales

President and CEO, Quintessence Designs, Philadelphia, PA 1996 - 2004
Created and implemented marketing plan for marine navigation software
Supervised independent contractor responsible for order fulfillment
Responsible for tech support and bookkeeping
Designed software manual, packaging and marketing materials

Activities Director for Independent Residents, Twining Village, Holland, PA 1990 - 1995
Scheduled and facilitated craft activities including art instruction, quilting group, craft group, sewing, weaving, knitting, organized resident volunteers to create items for annual bazaar
Directed residents in annual variety performance
Arranged appearances by visiting performers and guest speakers

Floating Craft Manager, Gaudio's, Philadelphia, PA 1986 - 1988
Provided personnel and creative support of seven area craft departments

SKILLS

Fabrication

Precious metal jewelry fabrication and finishing, jewelry repairs, stone setting, wax modeling, lost wax casting, vitreous enamel, laser welding, production processes, powder coating, plastics fabrication, silicone and resin casting, mold making, laser cutting

Software

Computer aided design, digital fabrication techniques using 3D printing, Rhinoceros, FlamingoXt, Magics, Blender, Netfabb, Microsoft Office, Adobe Creative Suite (Photoshop, Indesign, Illustrator, Muse, Lightroom, AcrobatPro), iMovie, Quickbooks, Facebook, Instagram, YouTube, Mac and Windows

Instruction

Teach both project based and skill overview classes, variety of hands-on skills and projects in both single and multiple session formats, one on one instruction, public speaking

Photography

Small scale product photography, studio lighting, photo editing, video editing

Organization and Administration

Project management, budgeting, secretarial support, trade show execution, long range planning

Arts and Crafts

Fine jewelry, crochet, knit, sewing, woodwork, drawing, painting, quilting, pysanky, calligraphy, stencil design, glass flame working, polymer clay, floral arrangement, holiday decoration, digital fabrication, laser cutting, 3D printing

AWARDS

Leeway Foundation Art and Change Grant
Philadelphia, PA October 2017

Community Artist in Residence
Tacony LAB, Mural Arts Philadelphia, PA Fall 2017

Tyler School of Art Metals Jewelry CAD-CAM Graduate Assistantship
Studio Technician and 3D Print Technician Fall 2015 - Spring 2017

Women's Jewelry Association Peggy Kirby Scholarship Fall 2016

EXHIBITIONS

<i>Society of North American Goldsmiths Exhibition in Motion</i> Society of North American Goldsmiths Conference	<i>Portland OR 2018</i>
<i>Society of North American Goldsmiths</i> <i>Jewelry and Metals Survey</i>	<i>Print Exhibition 2017</i>
<i>CraftForms 2017</i> Wayne Art Center	Wayne, PA 2017
<i>Journey By Water, MFA Thesis Exhibition</i> Tyler Contemporary Gallery	Philadelphia, PA 2017
<i>Process: Casting</i> Philadelphia Sculpture Gym	Philadelphia, PA 2016
<i>CraftForms 2015</i> Wayne Art Center	Wayne, PA 2015
<i>Philadelphia Museum of Art Craft Show</i> Tyler School of Art	Philadelphia, PA 2015
<i>Adorned Spaces Pop Up Exhibit: Yesterday, Today and Tomorrow</i> Society of North American Goldsmiths Conference	Boston, MA 2015
<i>Metals Jewelry CAD-CAM Senior Show Exhibition</i> Tyler School of Art	Philadelphia, PA 2015
<i>Collab Competition People's Choice Finalist</i> Philadelphia Museum of Art	Philadelphia, PA 2014
<i>Lamina Production Processes Show and Sale</i> Tyler School of Art	Philadelphia, PA 2014
<i>Temple University Global Conference</i> Temple University	Philadelphia, PA 2013
<i>Buyers Market of American Craft</i> Pennsylvania Convention Center	Philadelphia, PA 2011, 2012, 2014

STUDY ABROAD EXPERIENCE

<i>Tyler School of Art Metals UK Summer Workshop</i>	England and Scotland 2014
<i>Temple University Rome</i>	Rome, Italy 2013

VOLUNTEER EXPERIENCE

Chair, Mayfair Arts Initiative, NE Philadelphia	2015 - present
Treasurer, Usiloquy Dance Designs, Philadelphia, PA	2010 - Present
Chair, Friends of Russ Diamond, PA State Representative	2014 - Present